

 **Texas Council**
Risk Management Fund

RISK ADVISOR

SPRING 2020



The Risk Advisor is the TCRMF's Quarterly Newsletter providing risk management and risk control related tools and information to help our members better manage their risks. In our continual effort to provide information to members timely and in a more concise manner, the Risk Advisor is now in a new dynamic, electronic format. This new format provides the same wealth of information and tools in addition to quick links and direct access to resources on the TCRMF website. We hope you enjoy the new format!

2019 HURRICANE SEASON RECAP

As an early report of the approach of hurricane season, Colorado State University (CSU) issues a season forecast for the number and intensity of tropical storms. Last year in early 2019 CSU forecast 13 named storms with five of them reaching hurricane status. They amended this “average” forecast later in the season when the end of El Nino indicated an “above average” season. However, the 2019 hurricane season ended as the fourth most active season on record [Read More](#)

HURRICANE PREPAREDNESS 2020 SEASON

Hurricane season starts in a few weeks. The Colorado State University prediction has just been issued and their prediction is for another above average season. [Read More](#)

ADDITIONAL RESOURCES AND CHECKLISTS TO HELP YOU PREPARE FOR THE UPCOMING HURRICANE SEASON

[Hurricane Preparedness Checklist](#)

[Texas Emergency Information Sheet](#)

[Flood Emergency Response Plan - Template](#)

[Wind Emergency Response Plan - Template](#)

ARBITRATION AGREEMENTS

There are several advantages to using an arbitration process to settle disputes. One important advantage is that final settlement of a dispute can occur much sooner than a case litigated in court. The arbitrator allows each party some discovery and a limited number of witnesses leading to a session in which the matter is settled by the arbitrator.

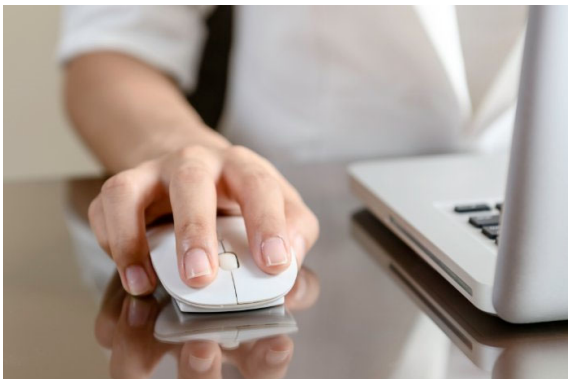
[Read More](#)





FRAMEWORK FOR SUCCESSFUL ACCIDENT INVESTIGATIONS

Employee accidents are difficult to predict. However, they leave clues as to how and why they happened. We can then piece those clues together to help us determine the root cause(s) of the accident. These clues will also give us the tools to prevent future accidents from occurring. In this article, we will run through the steps that will help you conduct an effective accident investigation. [Read More](#)



ACCIDENT AND CLAIM REPORTING

The Fund's members play a vital role in responding to and managing accidents and loss events that occur in the course of their day-to-day operations. These FAQs will help guide you through the loss notice and claim filing process. [Read More](#)

ADDITIONAL TOOLS AND INFORMATION

Recent Member Communications

Workers' Compensation
Forms

Liability and Property
Loss Notices

Fund Contact List

www.tcrmf.org